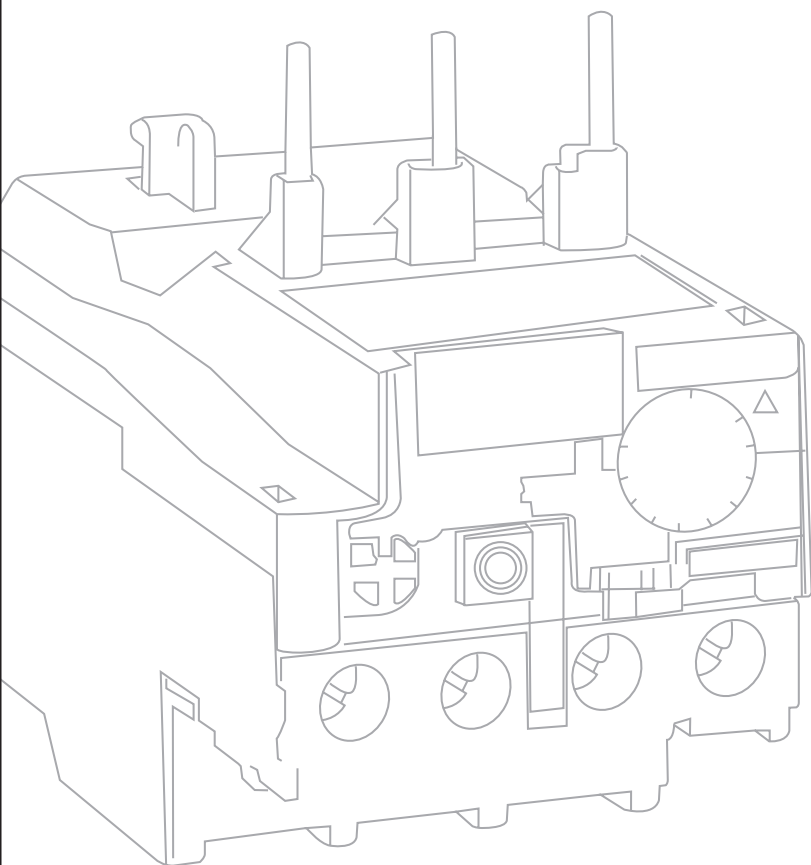


CNJUHO

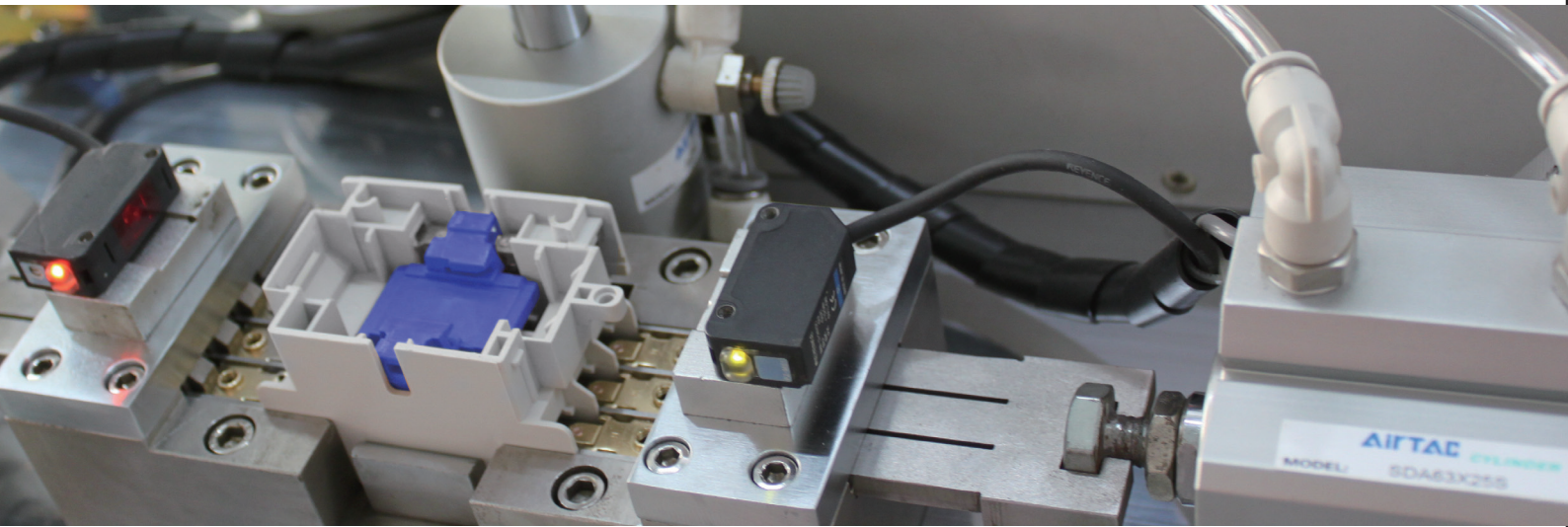
RELAY SERIES

JR28 SERIES THERMAL RELAY

.....

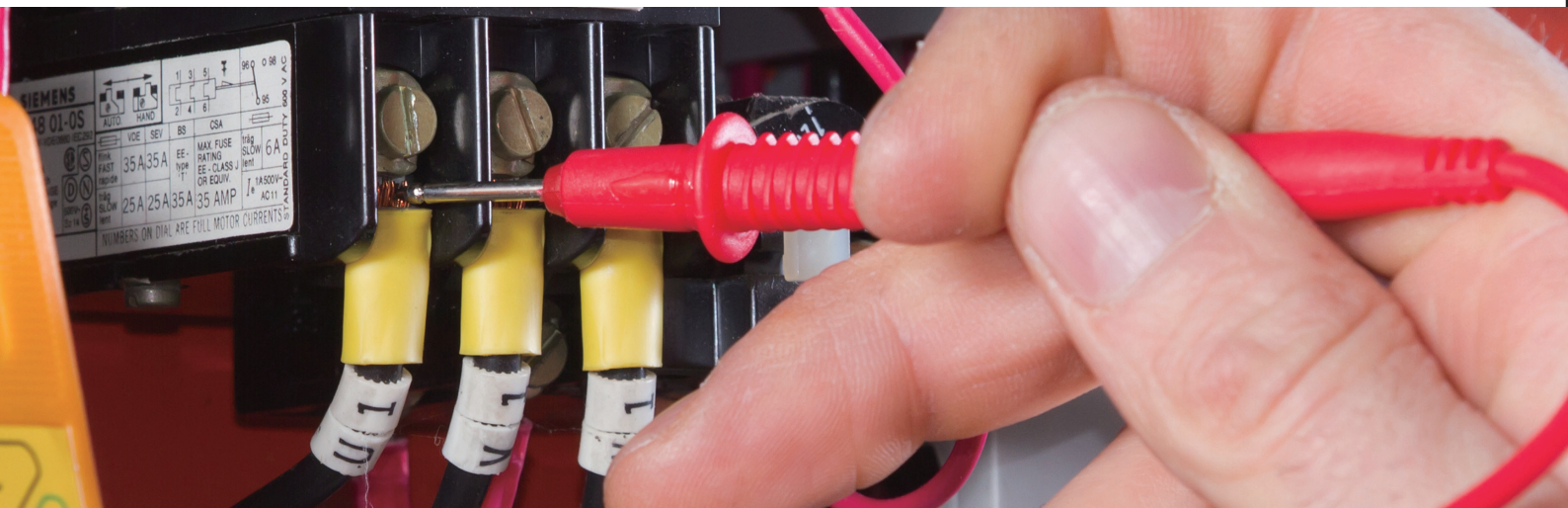


WENZHOU JUHONG ELECTRIC CO., LTD.



Production Force

The perfect production process, not only because we have advanced production process equipment and perfect detection means, in contrast, we pay more attention to the key role of people in this process. Technical experts and technical personnel to participate in, so that our products in the manufacturing, it has excellent potential value, which is to ensure the stability and reliability of our products!





CNJUHO PROFILE

Wenzhou Juhong Electric Co., Ltd. is located in Xiangyang Industrial Zone, Liushi City, it is the capital of electrical appliances. It is a comprehensive electrical appliance company with industrial control products as the leading, scientific research, production, manufacturing and sales.

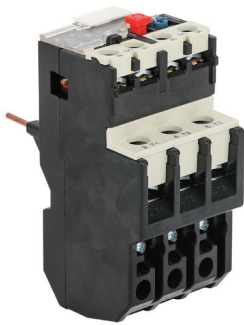
The company is major producing AC contactors, motor protectors, thermal relays, the first to pass the ISO9001 quality system certification, ISO14001 environmental protection system certification and OHSAS18001 occupational health and safety management system certification. all products have passed CE safety certification, and some products have passed CB certification. The company strict implementation of 6 S management, with beautiful environment, clean and orderly production workshop, each product has passed the inspection before the factory qualified rate reached 100%.

Our company products are exported to Asia, the Middle East, South America, Africa, customers throughout the world more than 140 countries and regions, widely used in petrochemical, metallurgy, machine tools, electrical equipment and so on. With the spirit of harmony, seeking truth, pragmatism and innovation, Juhong people uphold the management concept of creating value for customers, seeking development for employees, taking responsibility for society, serving the country for industry, striving for world famous brands and constantly striving for progress.

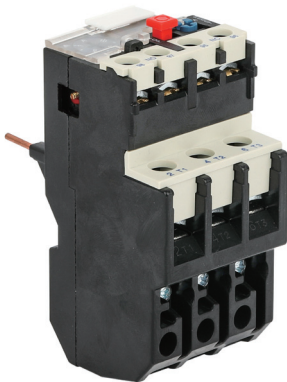
New journey, new starting point, new power, Juhong will bring new and old customers to create a better tomorrow.



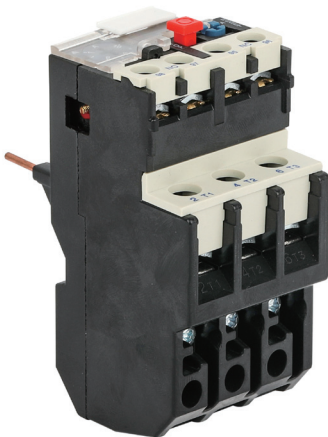
JLR2-D THERMAL OVERLOAD RELAY



JLR2-D13



JLR2-D23



JLR2-D33

1. Application

JLR2 series thermal relay is suitable for using in the circuit rated voltage up to 660V, rated current 93A AC 50/ 60Hz, for over-current protection of AC motor. The relay has the differential mechanism and temperature compensation and can plug in JLC1 series AC contactor. The product conforms to IEC60947-4-1 standard.

2. Motion Characteristic: Three-phase Balance Motion Time

No	Times of the setting current(A)	Motion time	Start condition	Ambient temperature
1	1.05	>2h	Cold state	20±5 °C
2	1.2	<2h	Heat state	
3	1.5	<4min	(Following the No.1 test)	
4	7.2	10A 2s<Tp≤10s ≤63A 10 4s<Tp≤10s >63A	Cold state	

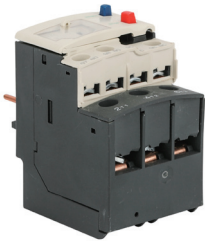
3. Phase-losing Motion Characteristic

No	Times of the setting current(A)		Motion time	Start condition	Ambient temperature
	Any two phases	Another phase			
1	1.0	0.9	>2h	Cold state	20±5 °C
2	1.15	0	<2h	Heat state (Following the No.1 test)	

4. Specification

Type	Number	Setting range (A)	For contactor
JLR2-D13	1301	0.1~0.16	JLC1-09~32
	1302	0.16~0.25	JLC1-09~32
	1303	0.25~0.4	JLC1-09~32
	1304	0.4~0.63	JLC1-09~32
	1305	0.63~1	JLC1-09~32
	1306	1~1.6	JLC1-09~32
	1307	1.6~2.5	JLC1-09~32
	1308	2.5~4	JLC1-09~32
	1310	4~6	JLC1-09~32
	1312	5.5~8	JLC1-09~32
	1314	7~10	JLC1-09~32
	1316	9~13	JLC1-09~32
	1321	12~18	JLC1-09~32
	1322	17~25	JLC1-32
JLR2-D23	2353	23~32	CJX2-09~32
	2355	30~40	JLC1-09~32
	3322	17~25	JLC1-09~32
	3353	23~32	JLC1-09~32
JLR2-D33	3355	30~40	JLC1-09~32
	3357	37~50	JLC1-09~32
	3359	48~65	JLC1-09~32
	3361	55~70	JLC1-09~32
	3363	63~80	JLC1-09~32
JLR2-D43	3365	80~93	JLC1-95
	4365	80~104	JLC1-95
	4367	95~120	JLC1-95~115
	4369	110~140	JLC1-115

JLRD NEW THERMAL OVERLOAD RELAY



JLRD-13



JLRD-33

1. Application

JLRD series thermal relay is suitable for using in the circuits rated voltage up to 660V, rated current 93A AC 50/60Hz, for over-current protection of AC motor. The relay has the differential mechanism and temperature compensation and can plug in JLC1N series AC contactor. The product conforms to IEC60947-4-1 standard.

2. Motion Characteristic: Three - Phase Balance Motion Time

No	Times of the setting current(A)	Motion time	Start condition	Ambient temperature					
1	1.05	>2h	Cold state	20±5 °C					
2	1.2	<2h	Heat state						
3	1.5	<4min	(Following the No.1 test)						
4	7.2	<table border="1" style="display: inline-table; vertical-align: middle;"> <tr> <td>10A</td> <td>2s<Tp≤10s</td> <td>≤63A</td> </tr> <tr> <td>10</td> <td>4s<Tp≤10s</td> <td>>63A</td> </tr> </table>	10A		2s<Tp≤10s	≤63A	10	4s<Tp≤10s	>63A
10A	2s<Tp≤10s	≤63A							
10	4s<Tp≤10s	>63A							

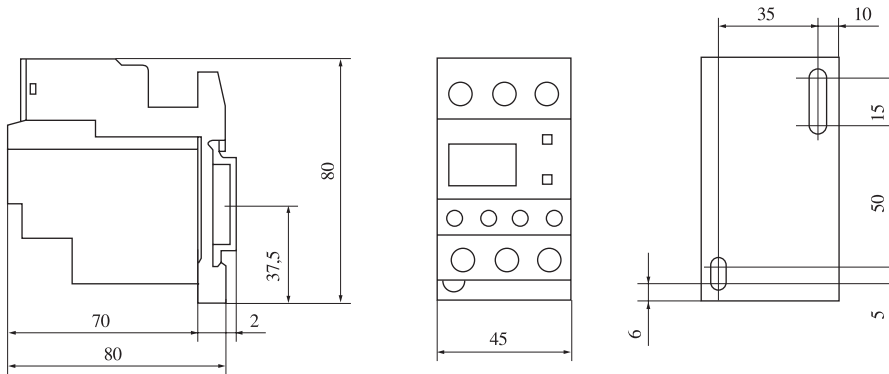
3. Phase - Losing Motion Characteristic

No	Times of the setting current(A)		Motion time	Start condition	Ambient temperature
	Any two phases	Another phase			
1	1.0	0.9	>2h	Cold state	20±5 °C
2	1.15	0	<2h	Heat state (Following the No.1 test)	

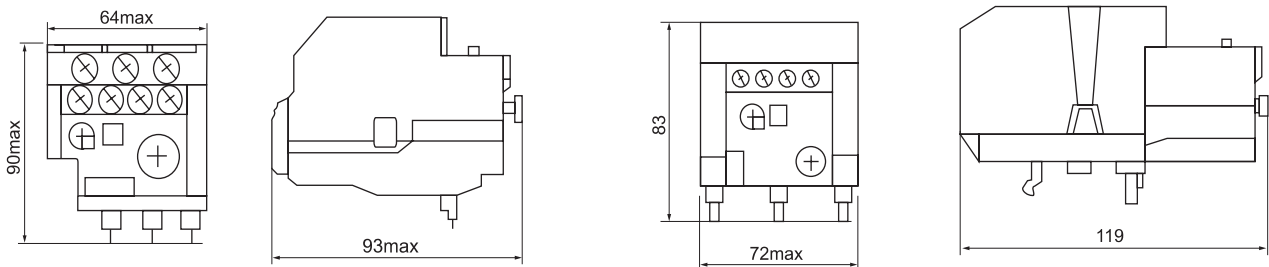
4. Specification

Type	Number	Setting range (A)	For contactor
JLRD-13	D01	0.10~0.16	JLC1-DN-09~38
	D02	0.16~0.25	JLC1-DN-09~38
	D03	0.25~0.40	JLC1-DN-09~38
	D04	0.40~0.63	JLC1-DN-09~38
	D05	0.63~1	JLC1-DN-09~38
	D06	1~1.7	JLC1-DN-09~38
	D07	1.6~2.5	JLC1-DN-09~38
	D08	2.5~4	JLC1-DN-09~38
	D10	4~6	JLC1-DN-09~38
	D12	5.5~8	JLC1-DN-09~38
	D14	7~10	JLC1-DN-09~38
	D16	9~13	JLC1-DN-09~38
	D21	12~18	JLC1-DN-09~38
	D22	16~24	JLC1-DN-09~38
JLRD-33	3322	17~25	JLC1-DN-40~95
	3353	23~32	JLC1-DN-40~95
	3355	30~40	JLC1-DN-40~95
	3357	37~50	JLC1-DN-50~95
	3359	48~65	JLC1-DN-50~95
	3361	55~70	JLC1-DN-65~95
	3363	63~80	JLC1-DN-65~95
	3365	80~93	JLC1-DN-95

5. Outline And Mounting Dimension



JLRD-25

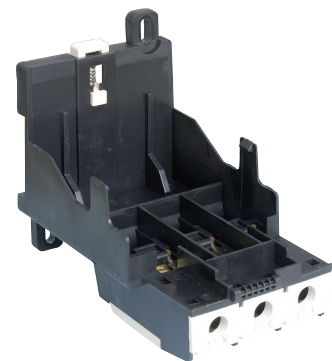
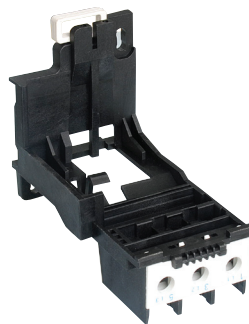


JLRD-36

JLRD-93

6. Accessories

Pic



Description

JLRD-36 mounting base

JLRD-93 mounting base

Application

Assembled with JLRD-36 to form a complete set

Assembled with JLRD-93 to form a complete set

J3UA THERMAL OVERLOAD RELAY



J3UA-45



J3UA-63



J3UA-80

1. Application

J3UA thermal relay is suitable for AC 50/60Hz, voltage up to 660V and current up to 630A, general AC motor of long or discontinuous long operation, used as overload protection and has the functions of breaking phase protection, temperature compensation, and trip indication. It can automatically and manually get back. It can be fixed with contactor CJX1 together, also be independently fixed. The product conforms to IEC60947-4-1 standard.

2. Motion Characteristic: Three-Phase Balance Motion Time

No	Times of the setting current(A)	Motion time	Start condition	Ambient temperature
1	1.05	>2h	Cold state	20±5 °C
2	1.2	<2h	Heat state	
3	1.5	<4min	(Following the No.1 test)	
4	7.2	10A 2s<Tp≤10s ≤63A 10 4s<Tp≤10s >63A	Cold state	

3. Phase-Losing Motion Characteristic

No	Times of the setting current(A)		Motion time	Start condition	Ambient temperature
	Any two phases	Another phase			
1	1.0	0.9	>2h	Cold state	20±5 °C
2	1.15	0	<2h	Heat state (Following the No.1 test)	

4. Specification

Type	Number	Setting range (A)	For contactor	Type	Number	Setting range (A)	For contactor
J3UA-12.5	0A	0.1~0.16	CJX1-09 CJX1-12	J3UA-12.5	0A	0.1~0.16	CJX1-16 CJX1-22
	0C	0.16~0.25			0C	0.16~0.25	
	0E	0.25~0.4			0E	0.25~0.4	
	0G	0.4~0.63			0G	0.4~0.63	
	0J	0.63~1			0J	0.63~1	
	0K	0.8~1.25			0K	0.8~1.25	
	1A	1~1.6			1A	1~1.6	
	1B	1.25~2			1B	1.25~2	
	1C	1.6~2.5			1C	1.6~2.5	
	1D	2~3.2			1D	2~3.2	
	1E	2.5~4			1E	2.5~4	
	1F	3.2~5			1F	3.2~5	
1G	4~6.3	1G	4~6.3				
1H	5~8	1H	5~8				
1J	6.3~10	1J	6.3~10				
1K	8~12.5	1K	8~12.5				
2S	10~14.5	2S	10~14.5				
					2A	10~16	
					2B	12.5~20	
					2C	16~25	

Type	Number	Setting range (A)	For contactor	Type	Number	Setting range (A)	For contactor			
J3UA-32	1G	4~6.3	CJX1-32	J3UA-63	OK	0.8~1.25	CJX1-09~63			
	1J	6.3~10			1A	1~1.6				
	2A	10~16			1B	1.25~2				
	2B	12.5~20			1C	1.6~2.5				
	2C	16~25			1D	2~3.2				
	2D	20~32			1E	2.5~4				
	2Q	25~36			1F	3.2~5				
J3UA-45	0A	0.1~0.16	CJX1-32 CJX1-38		1G	4~6.3		CJX1-85 CJX1-110		
	0C	0.16~0.25			1H	5~8				
	0E	0.25~0.4			1J	6.3~10				
	0G	0.4~0.63			1K	8~12.5				
	0J	0.63~1			2A	10~16				
	OK	0.8~1.25			2B	12.5~20				
	1A	1~1.6			2C	16~25				
	1B	1.25~2		2D	20~32					
	1C	1.6~2.5		2E	25~40					
	1D	2~3.2		2M	32~45					
	1E	2.5~4		2T	40~57					
	1F	3.2~5		2P	50~63					
	1G	4~6.3		2H	55~80					
	1H	5~8		2W	63~90					
J3UA-80	1J	6.3~10	CJX1-45 CJX1-63 CJX1-75 CJX1-85	J3UA-135	2X	80~110	CJX1-140			
	1K	8~12.5		3H	90~120					
	2A	10~16		3J	110~135					
	2B	12.5~20		2H	55~80					
	2C	16~25		2W	63~90					
	2D	20~32		2X	80~110					
	2Q	25~36		3H	90~120					
	2R	32~40		3J	110~135					
	8M	36~45		3K	120~150					
	J3UA-63/F	1G		4~6.3	CJX1-170 CJX1-205	J3UA-150		2H	55~80	CJX1-110~400
		8A		11~17		2W		63~90		
		2B		12.5~20		2X		80~110		
		2C		16~25		3H		90~120		
		2D		20~32		3J		110~135		
2E		25~40	3K	120~150						
2F		32~50	3L	135~160						
2T		40~57	3M	150~180						
2P		50~63	2K	80~125						
2V		57~70	3B	125~200						
2U		63~80	3C	160~250						
8W		70~88	3D	200~320						
0A		0.1~0.16	CJX1-09~63	J3UA-400		3E	250~400	CJX1-400		
0C		0.16~0.25		3F		320~500				
0E	0.25~0.4	J3UA-630		3G	400~630					
0G	0.4~0.63									
0J	0.63~1									

JGTH THERMAL OVERLOAD RELAY

1. Scope Of Application



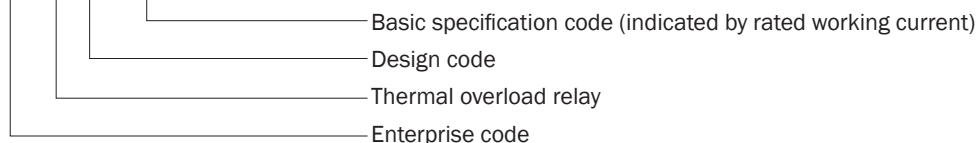
JGTH-22

JGTH series thermal relay is suitable for AC 50/60Hz, voltage to 690V-1000V, current 0.1~150A for long-term work or intermittent long-term work for general AC motor overload and phase failure protection, with phase failure protection, temperature compensation, trip indication Function, and can be automatically and manually reset, can be plugged in with the contactor, can also be installed independently.

This product complies with GB/T14048.4, GB/T14048.5, IEC60947-4, VDE0660 standards.

2. Product Number

JGTH R 8 - □□



JGTH-40

3. Protection Characteristics

project	Serial number	Setting current multiple		Action time	Starting condition
Overload protection	1	1.05		No action within 2 hours	Cold state
	2	1.2		<2h	After the serial number 1 test
	3	1.5		<2min	After the serial number 1 test
	4	7.2		2s<Tp<10s	Cold state
Phase failure protection	5	Any two phase	Another phase	No action within 2 hours	Cold state
		1.0	0.9		
	6	1.15	0	<2h	After the serial number 1 test



JGTH-85

4. Motion Characteristic: Three - Phase Balance Motion Time

Set current cinies	Motiong time	Stant condition	Temperature
1.05	>2h	cold state	20±5 °C
1.2	<2h	heat state	
1.5	<4min	(Following the No.1 test)state	
7.2	10A 2s<YP≤10S ≤63A	Cold state	
	10A 4s<YP≤10S >63A		

5. Phase - Losing Motion Characteristic

Set current cinies		Motiong time	Stant condition	Temperature
Arbitrary two phase	Three Phase			
1.0	0.9	>2h	cold state	20±5 °C
1.15	0	<2h	heat state Following the No. 1 test	

6. Specification

Ratings	Type	GTH-22			GTH-40			GTH-85		
	Nominal current	Ranges			Ranges			Ranges		
		Min.	Mid.	Max.	Min.	Mid.	Max.	Min.	Mid.	Max.
Rated current (A)	0.14	0.1	0.14	0.16						
	0.21	0.16	0.21	0.25						
	0.33	0.25	0.33	0.4						
	0.52	0.4	0.52	0.63						
	0.82	0.63	0.82	1						
	1.3	1	1.3	1.6						
	2.1	1.6	2.1	2.5						
	3.3	2.5	3.3	4						
	5	4	5	6	4	5	6			
	6.5	5	6.5	8	5	6.5	8			
	7.5	6	7.5	9	6	7.5	9			
	8.5	7	7.5	10	7	7.5	10	7	7.5	10
	11	9	11	13	9	11	13	9	11	13
	15	12	15	18	12	15	18	12	15	18
	19	16	19	22	16	19	22	16	19	22
	22				18	22	26	18	22	26
	22				18	22	26	18	22	26
	30				24	30	36	24	30	36
	34				28	34	40	28	34	40
	42							34	42	50
55							45	55	65	
65							54	65	75	
74							63	74	85	
Element No.	2heaters	standard			standard			standard		
	3heaters	option			option			option		
Aux.contact	1NO 1NC			1NO 1NC			1NO 1NC			
Reset type	AutoManual			AutoManual			AutoManual			
Power consumption	1.8VAheater			2.0VAheater			3.5VAheater			
Dimension(mm)(Wx Hx D)	44 ×68 ×90			53 ×67 ×90			70 ×73 ×103			
Separate mounting unit	AZ-22H			AZ-40H			AZ-85H			
Other model	3heaters	GTH-22/3			GTH-40/3			GTH-85/3		
	Differential	GTK-22			GTK-40			GTK-85		
	Delay open	GTH-22/L			GTH-40/L			GTH-85/L		
Applied contactors	GMC-9,12,18,22			GMC-32,40			GMC-50,65,75,85			
Applied switches	GMS-9,12,18,22			GMS-32,40			GMS-50,65,75,85			

If the models and specifications in this product catalogue is changed due to the change of products , we will not inform .This product Catalogue is checked is checked by several times to be correct , but it is only for reference . All is according to products and user Instruction .

 This manual uses eco-paper printing

WENZHOU JUHONG ELECTRIC CO., LTD.

ADD:XIANGYANG INDUSTRIAL ZONE, LIUSHI,
YUEQING, ZHEJIANG, CHINA.

TEL:+86-577-62628608

E-mail: sales@juhoele.com

www.juhoele.com